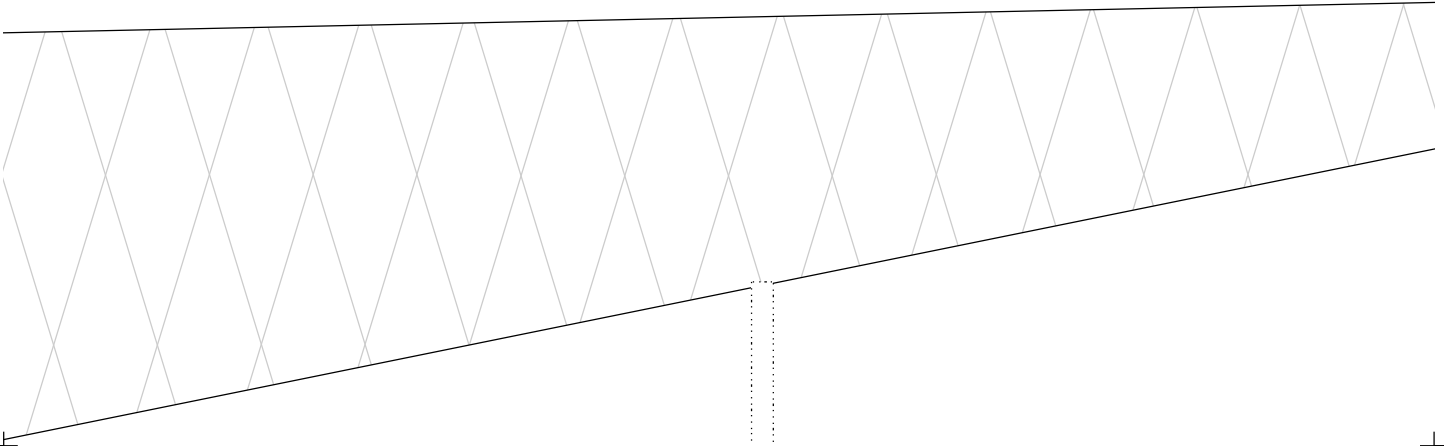
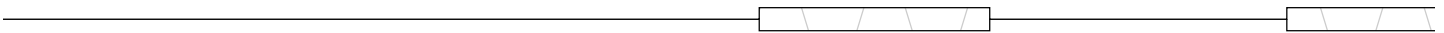
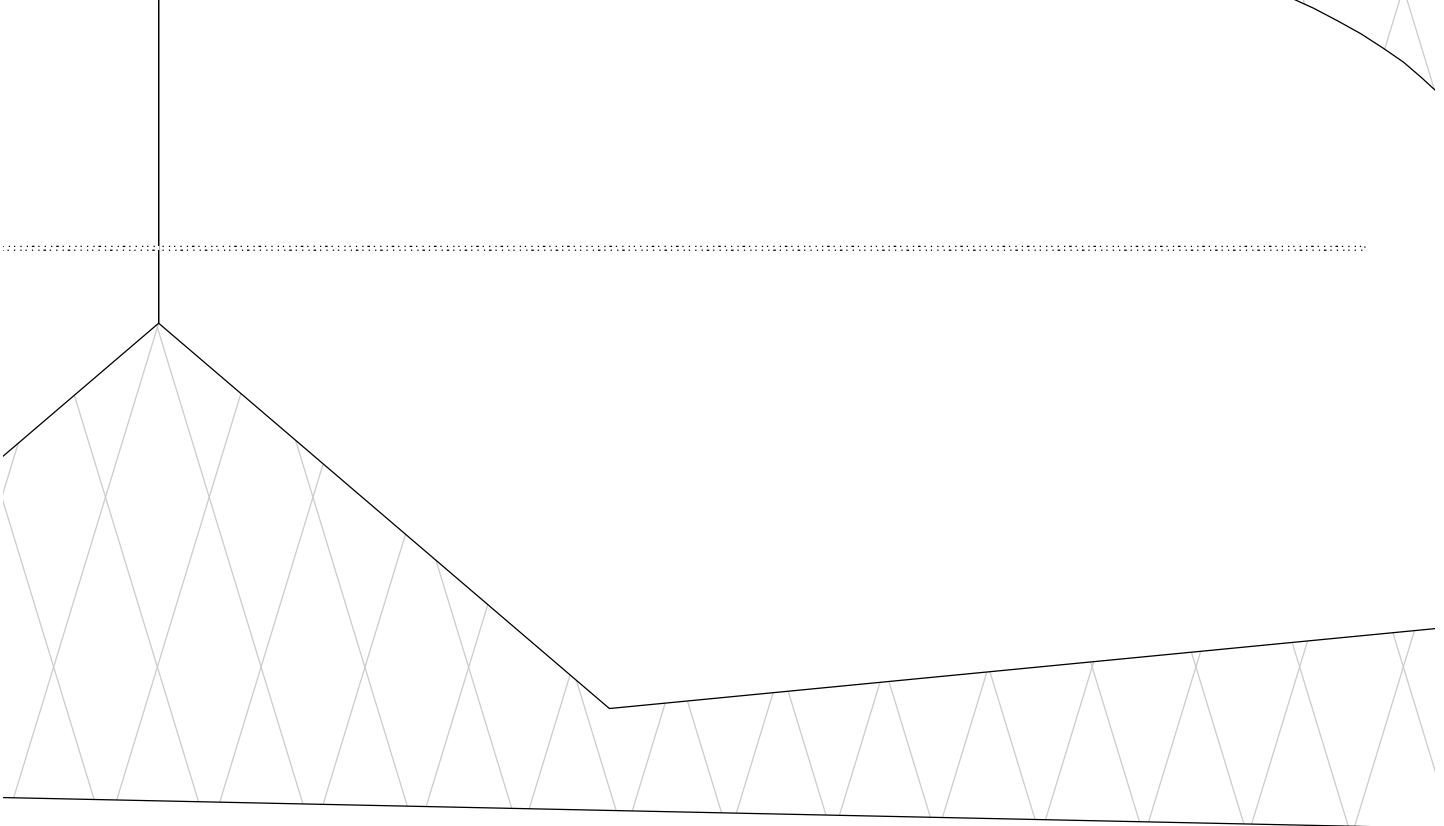
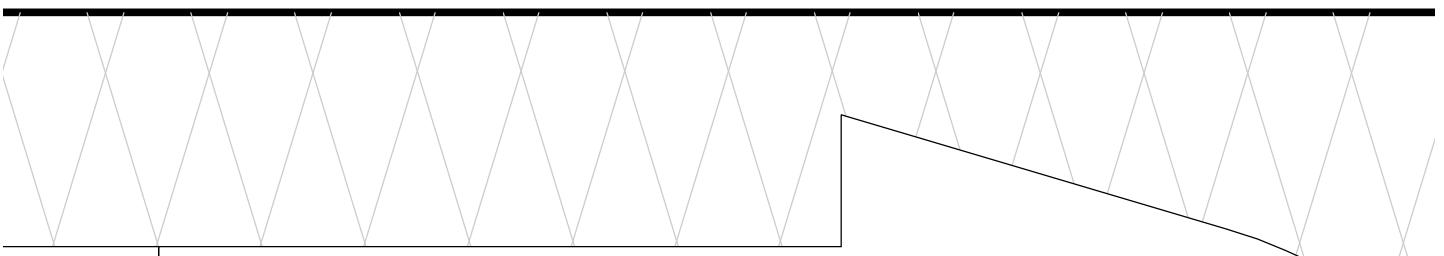
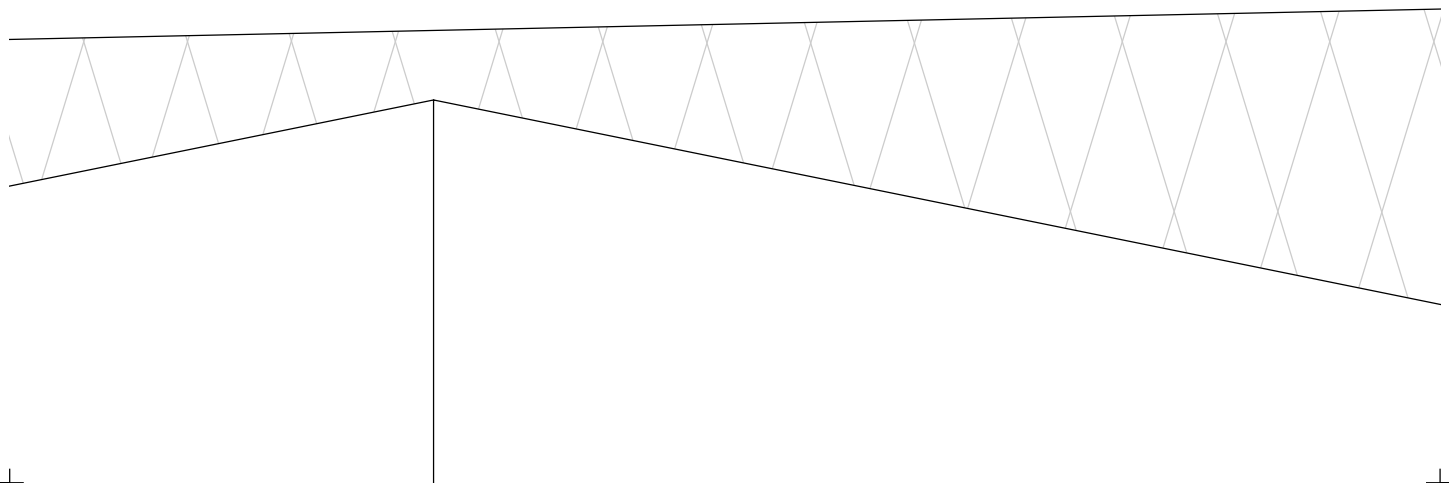
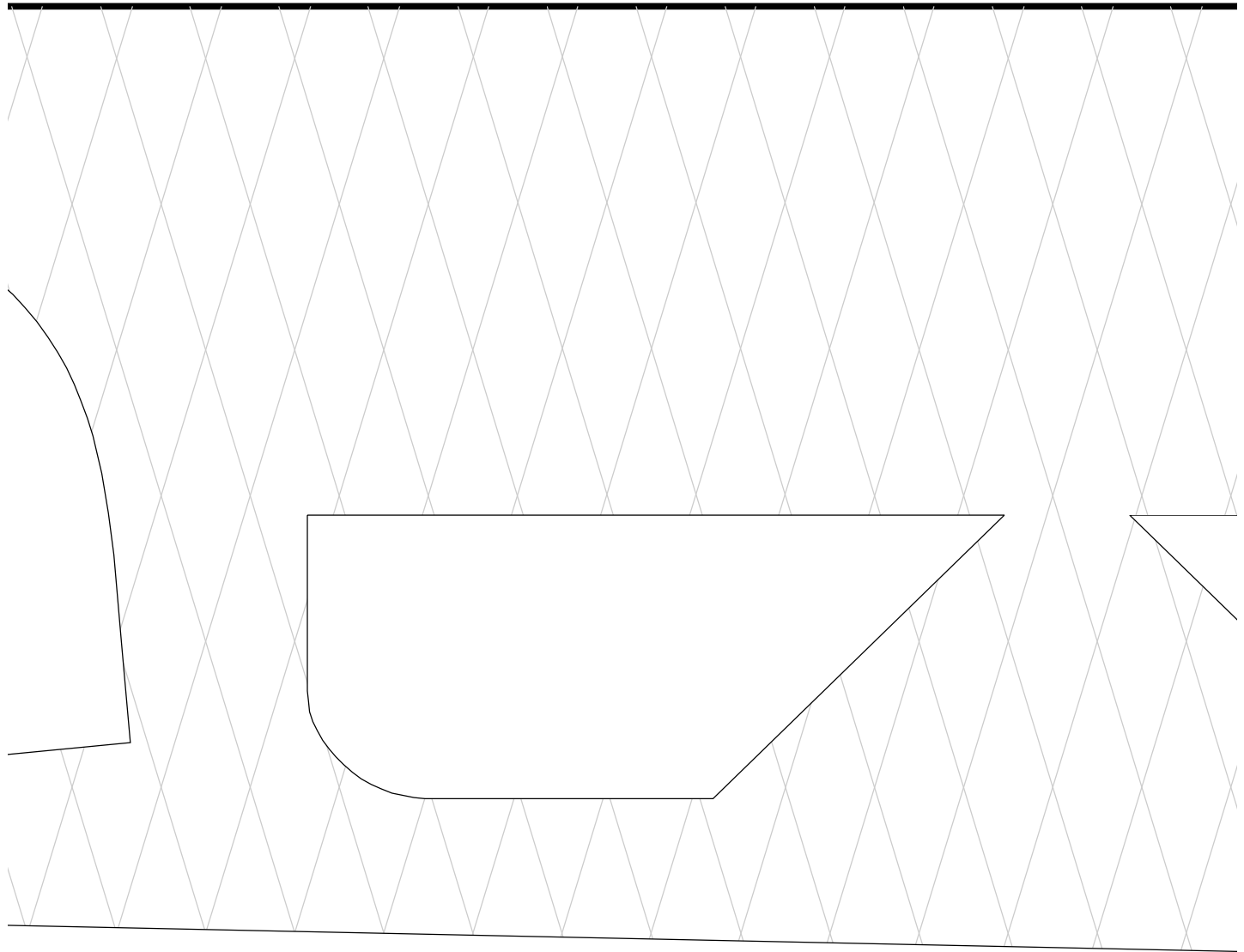


(2.1)

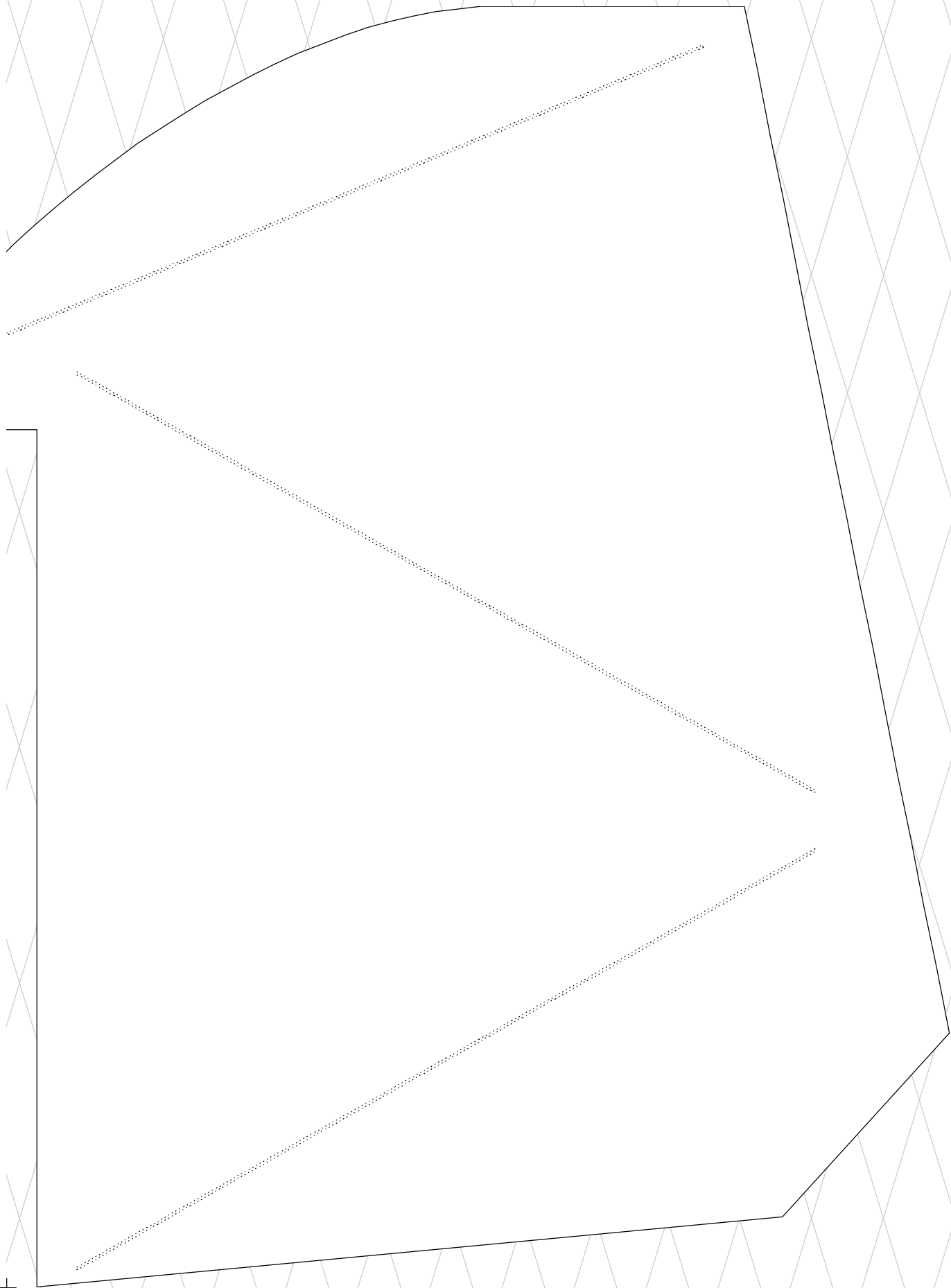


(3, 1)

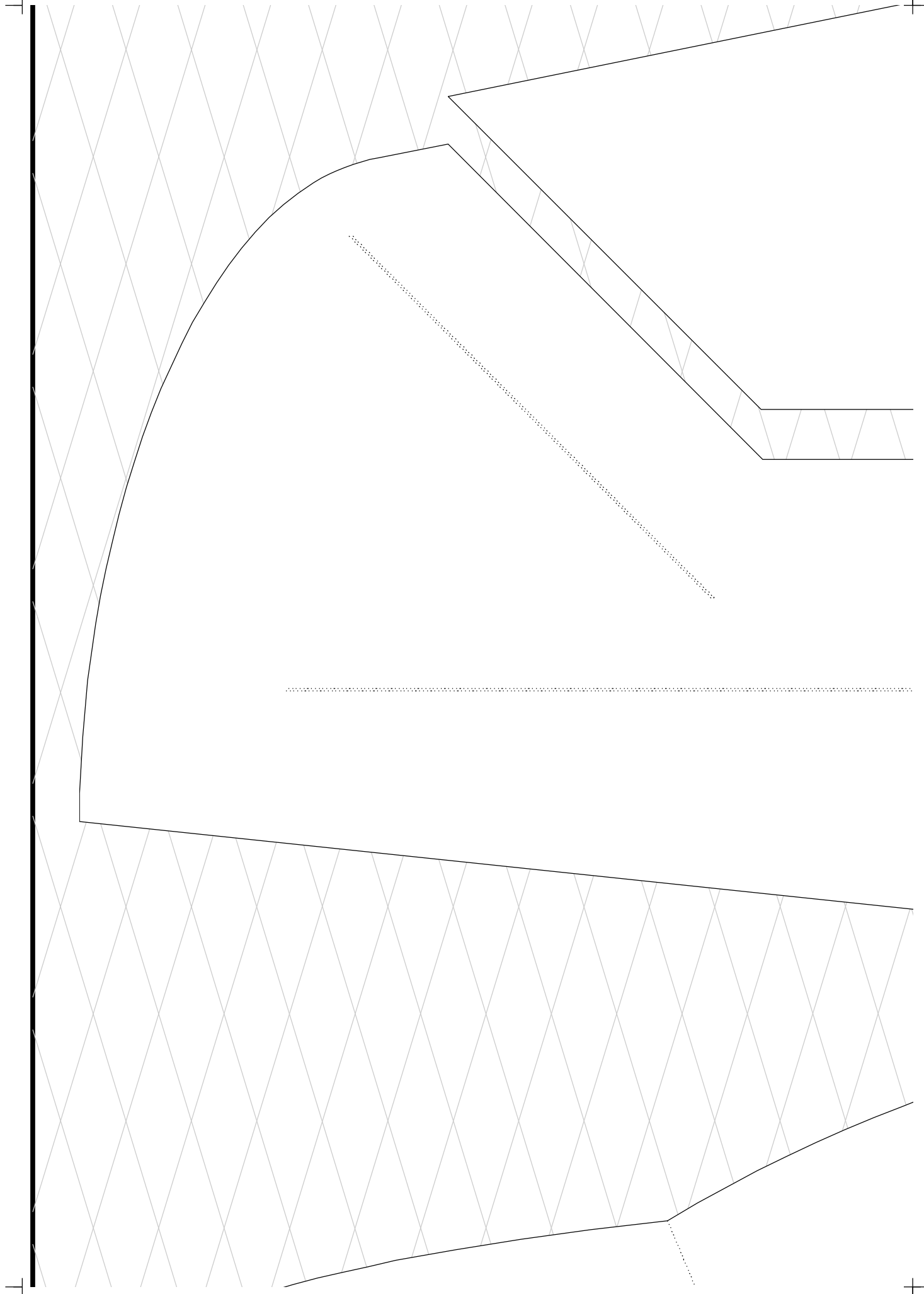


(4, 1)

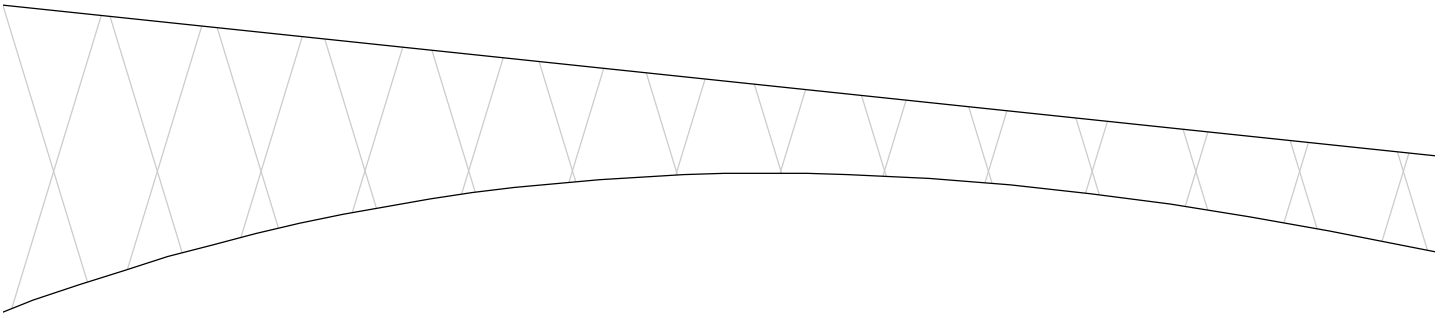
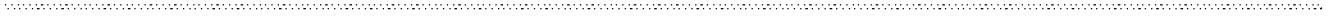
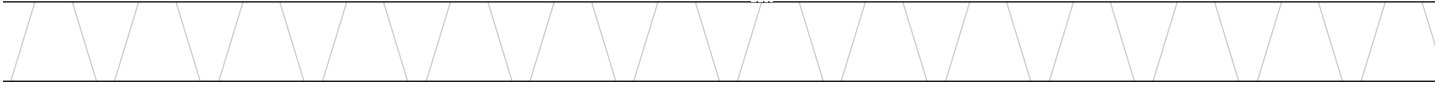




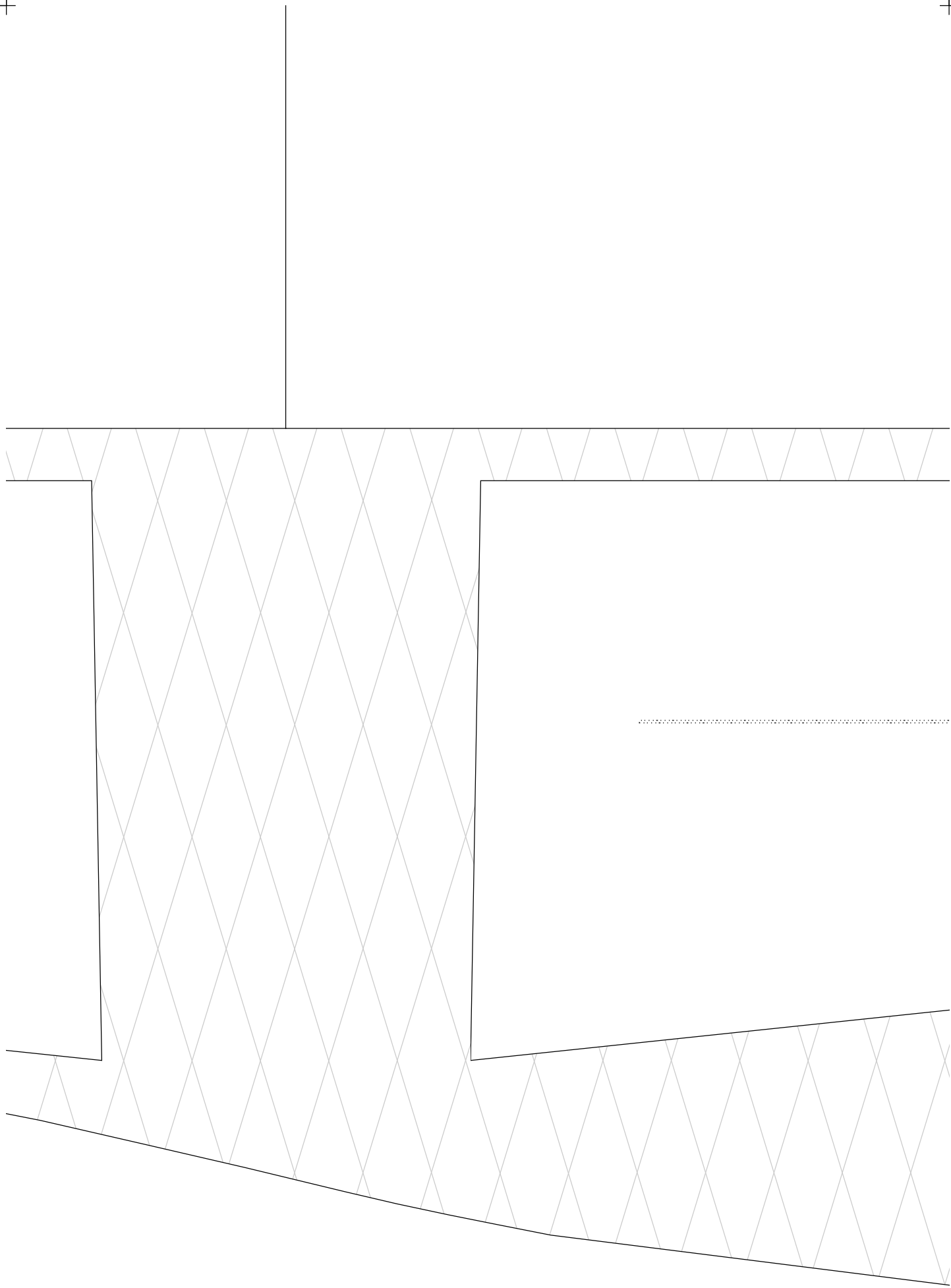
(1, 2)



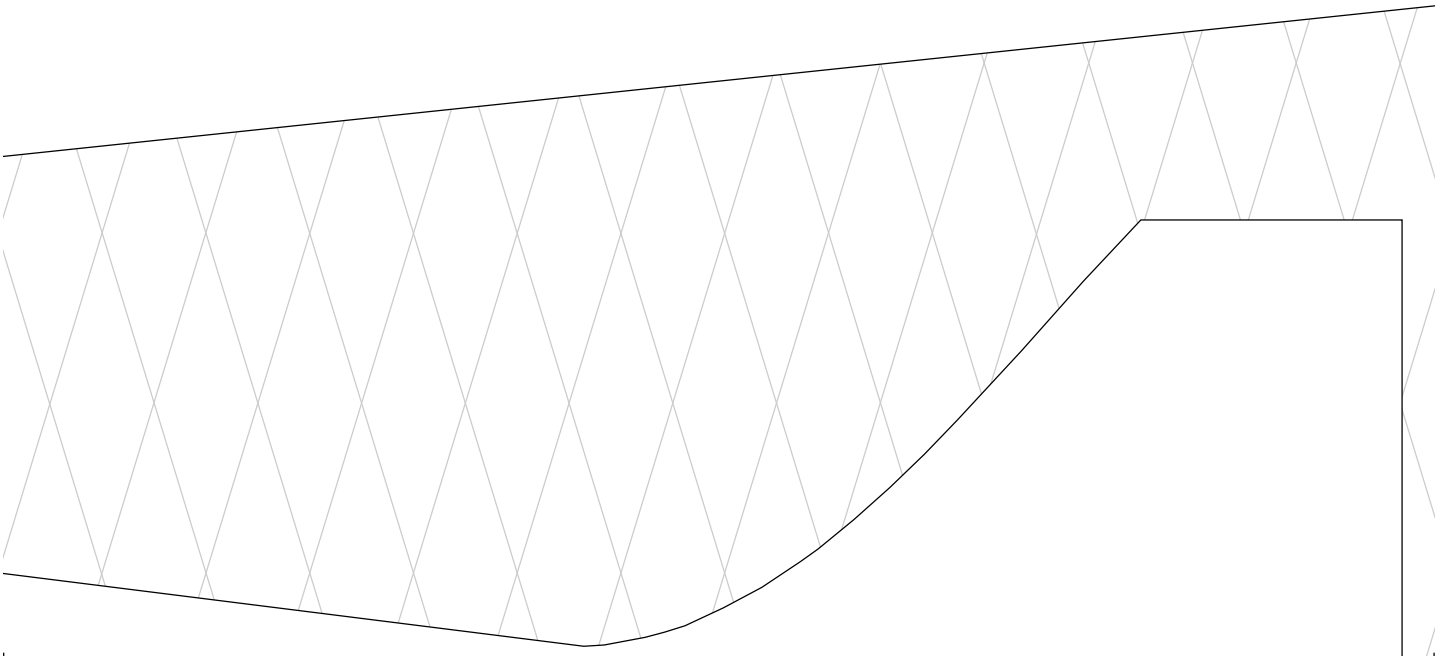
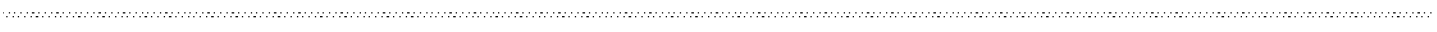
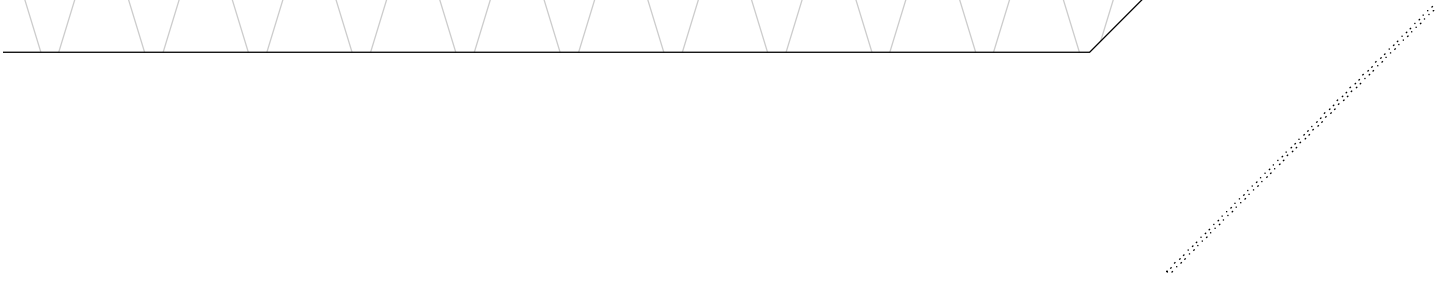
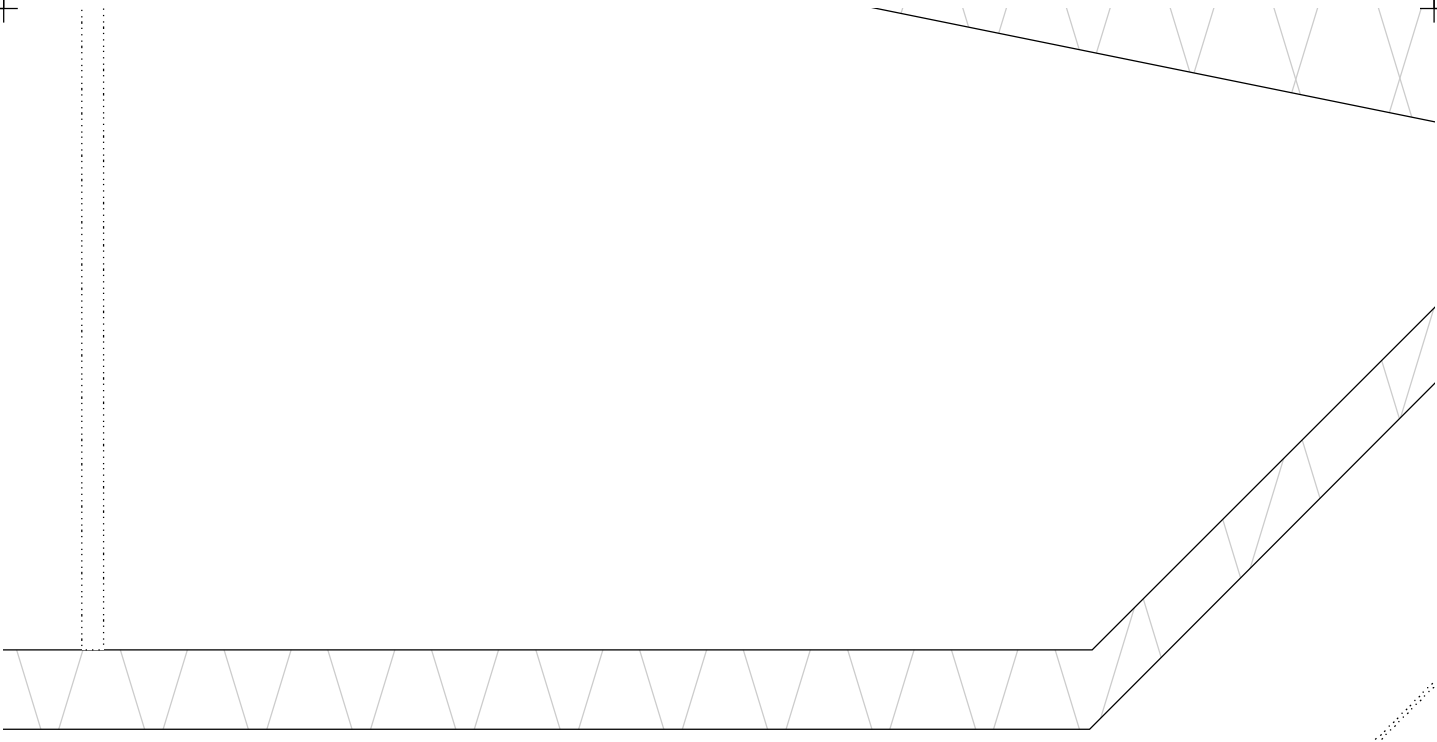
(2, 2)



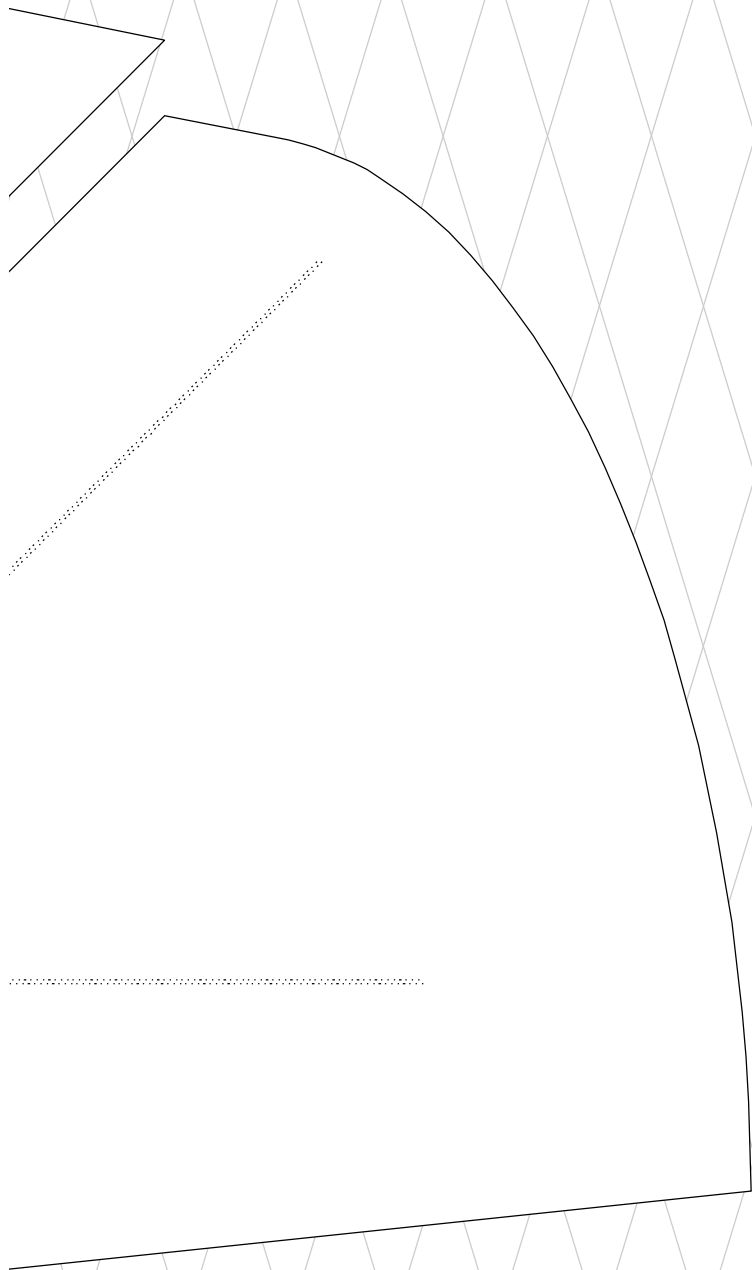
(3, 2)



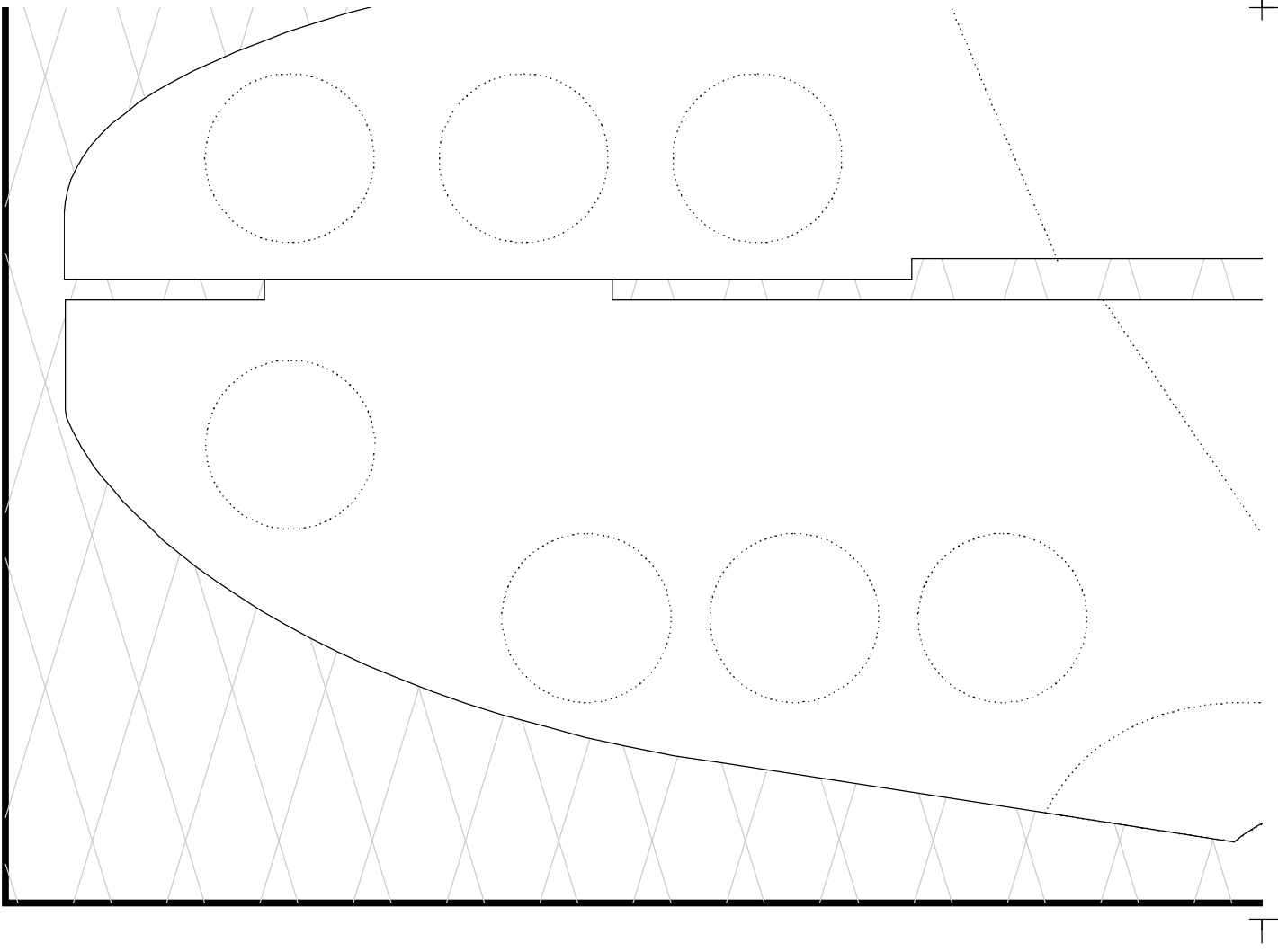
(4, 2)

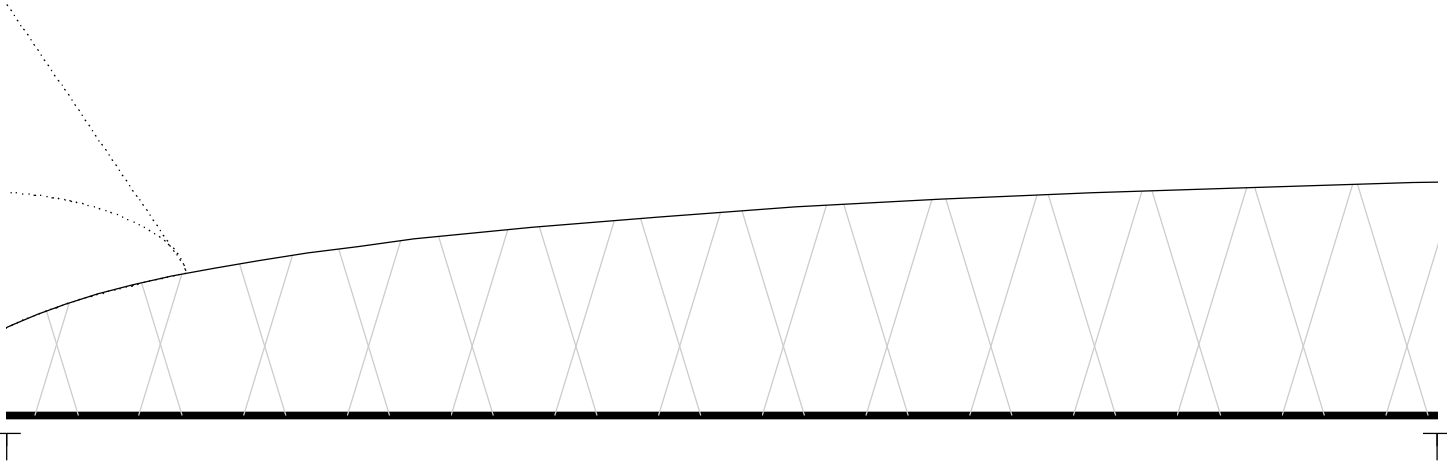
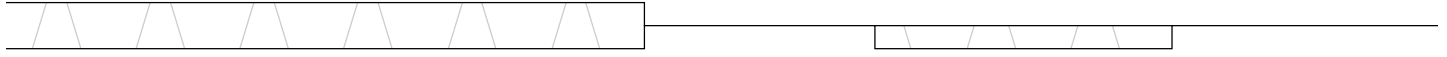


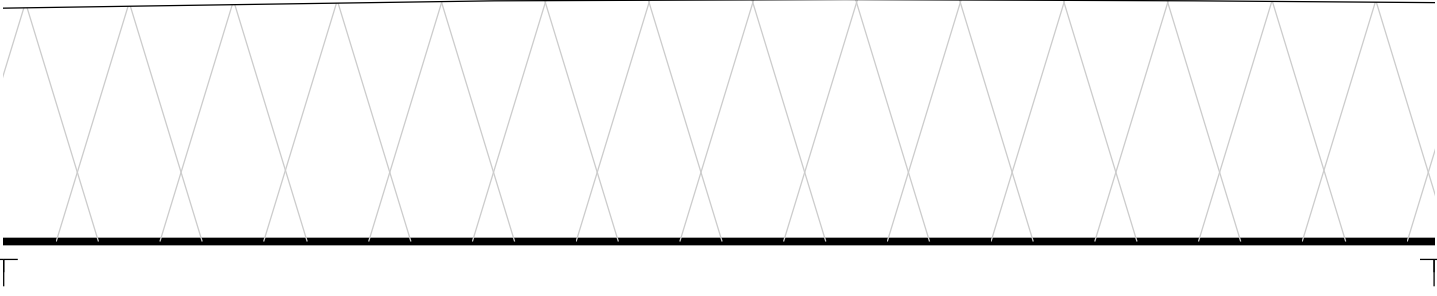
(5, 2)



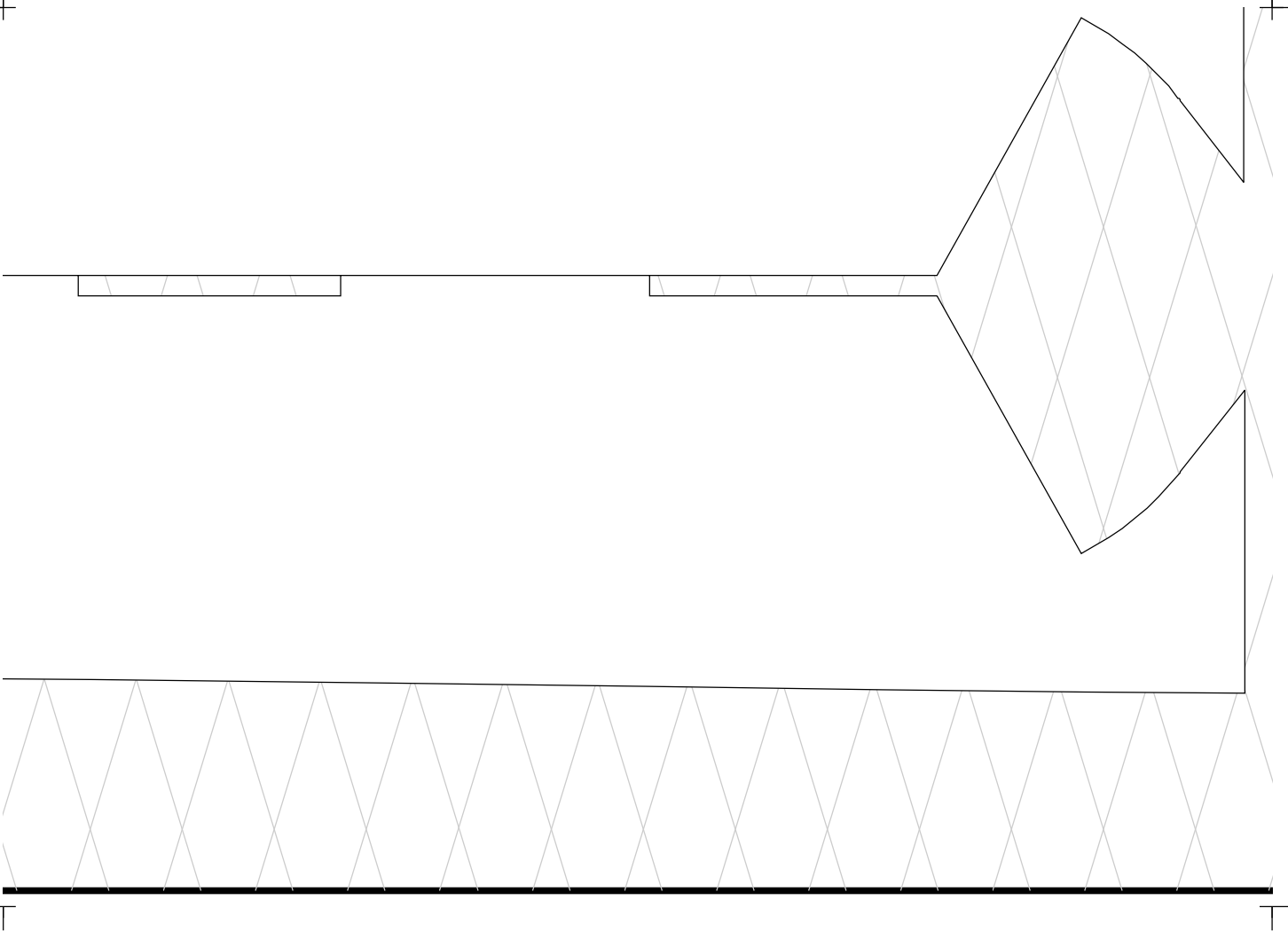
(1, 3)

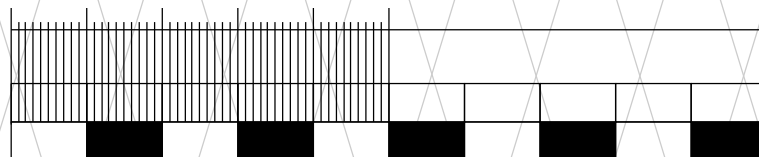






(4, 3)





WZORZEC 100 mm - SKALA 1:1

**TOTO-25 „Bim Ber”
AKROBACYJNY MODEL HALOWY
WZORCE DEPRONOWE**

Konstrukcja i kreślenie : Tomasz B.Motyl „Motylasty” - 2016
Publikacja planów : czerwiec 2016
www.motylasty.pl , www.motylasty.blogspot.com , email : tomaszbm@gmail.com



Prezentowana konstrukcja jest własnością intelektualną autora. Wykorzystywanie rysunków i informacji w celach innych, niż budowa modelu na własne potrzeby lub też i w innych celach komercyjnych bez zgody autora jest czystym świństwem.